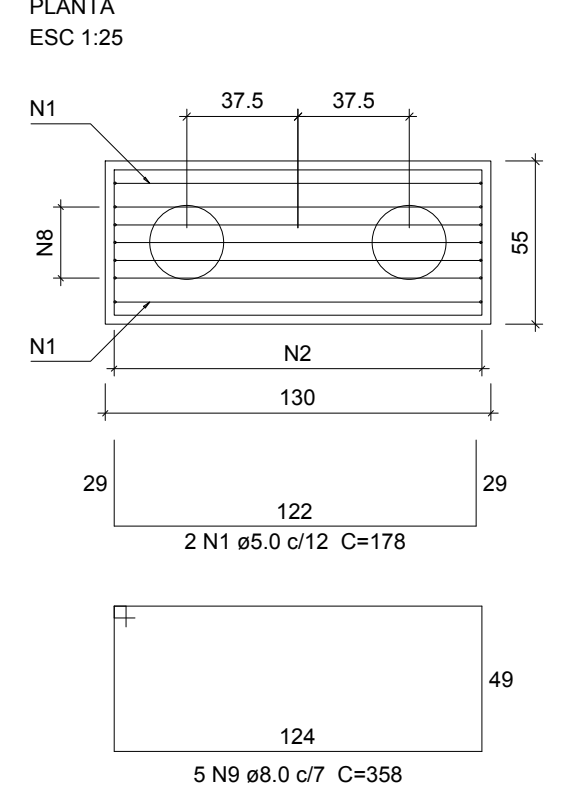
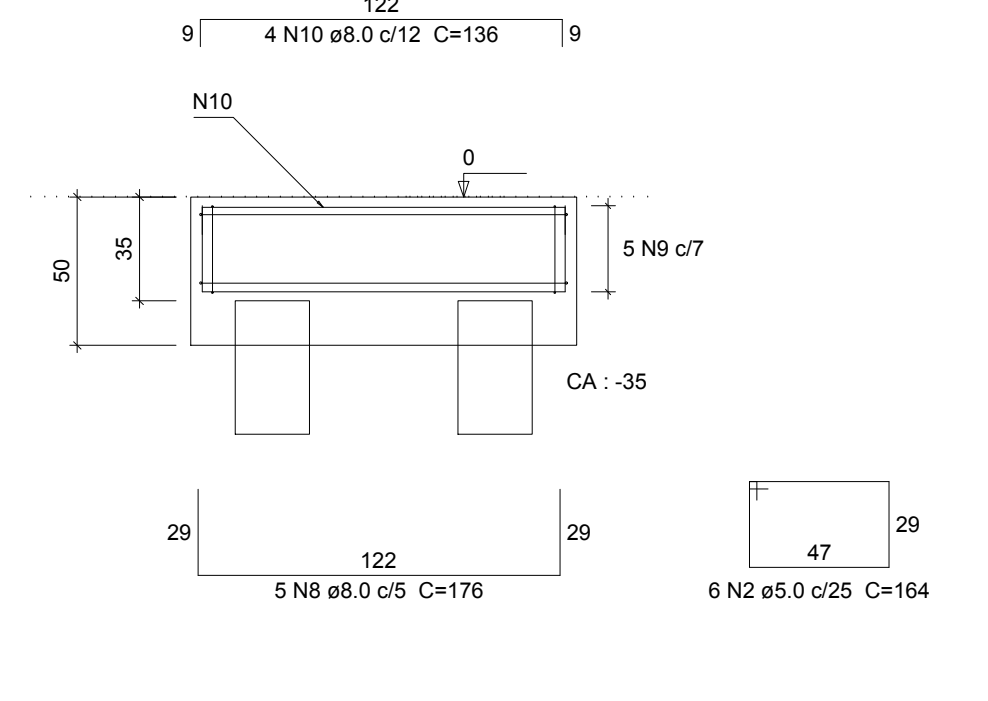


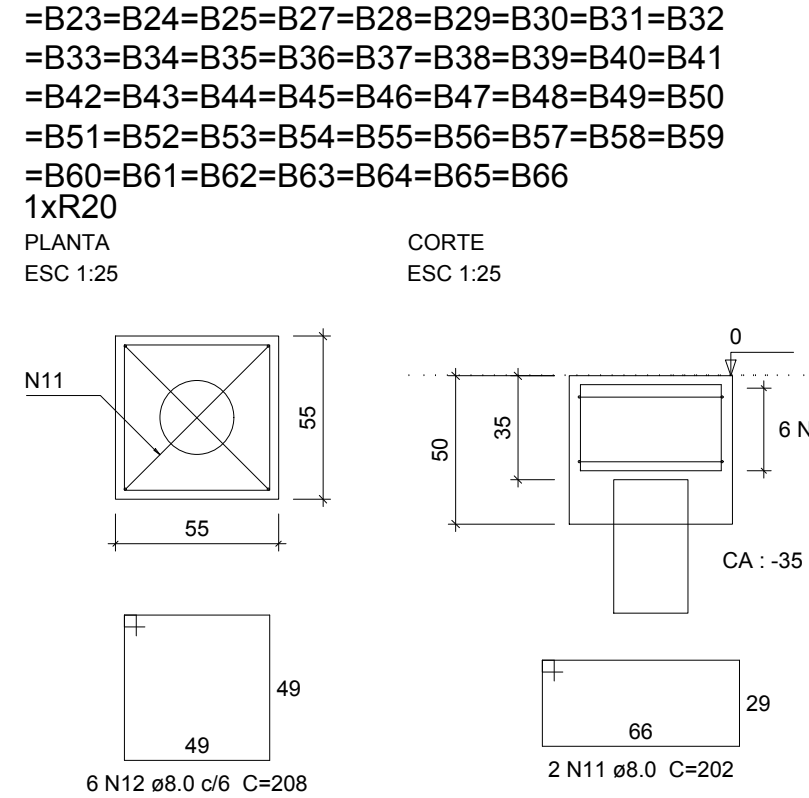
B1=B3=B26  
2xR20  
PLANTA  
ESC 1:25



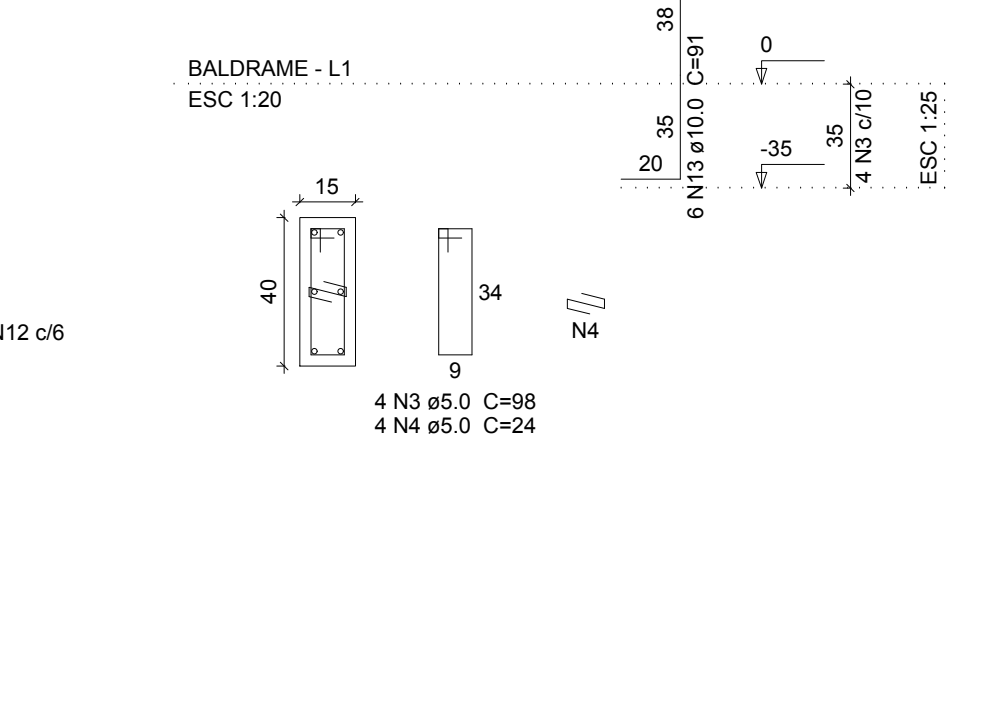
CORTE  
ESC 1:25



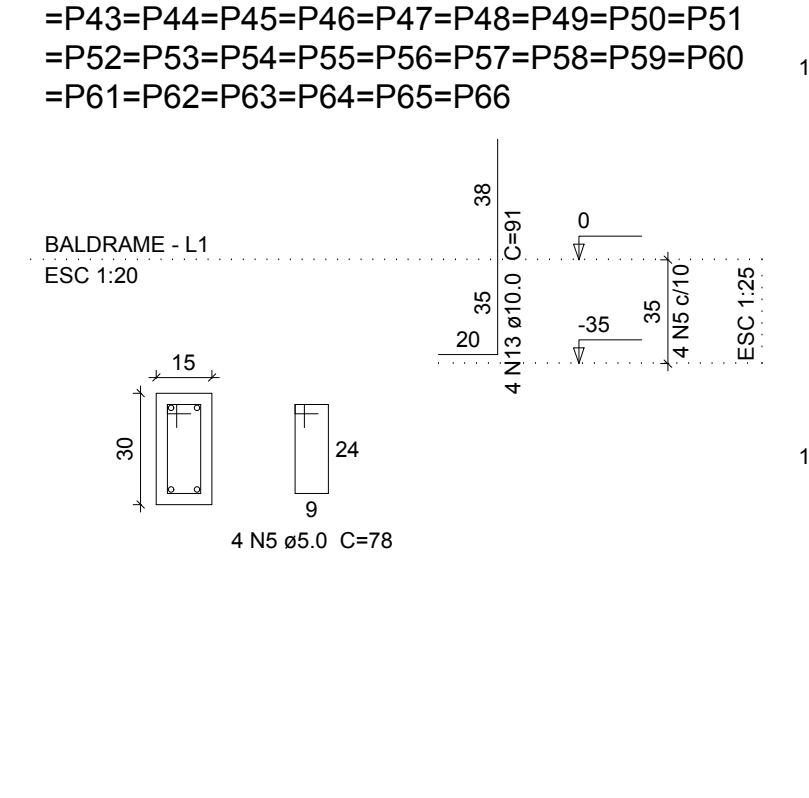
B2=B4=B5=B6=B7=B8=B9=B10=B11=B12=B13  
=B14=B15=B16=B17=B18=B19=B20=B21=B22  
=B23=B24=B25=B27=B28=B29=B30=B31=B32  
=B33=B34=B35=B36=B37=B38=B39=B40=B41  
=B42=B43=B44=B45=B46=B47=B48=B49=B50  
=B51=B52=B53=B54=B55=B56=B57=B58=B59  
=B60=B61=B62=B63=B64=B65=B66  
1xR20  
PLANTA  
ESC 1:25



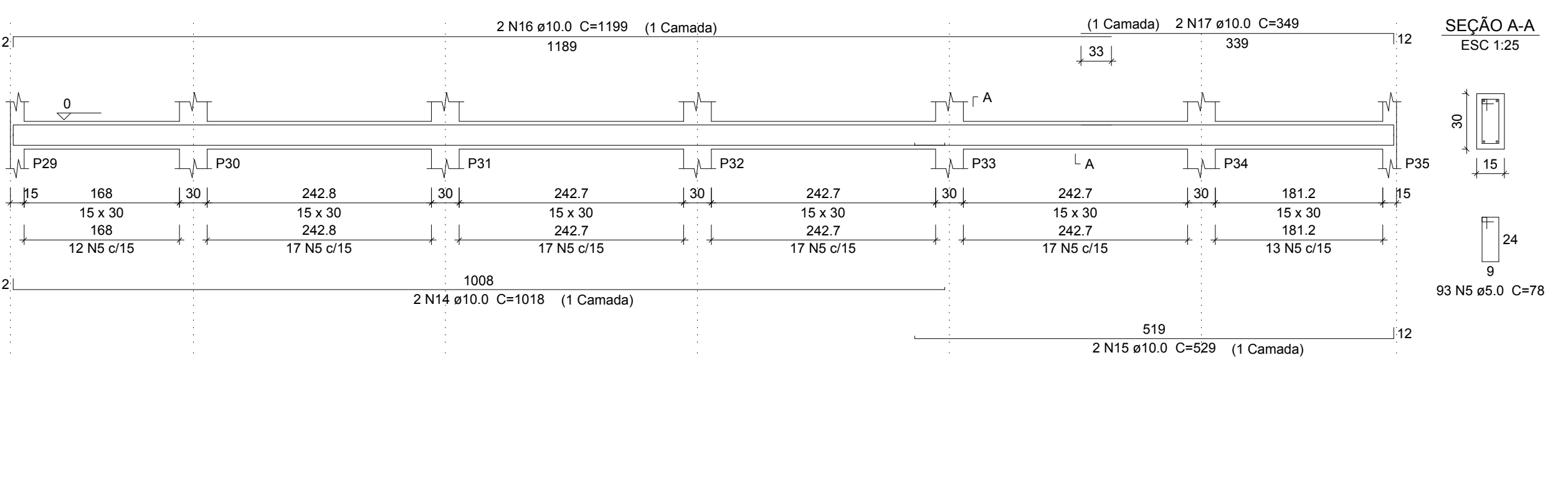
CORTE  
ESC 1:25



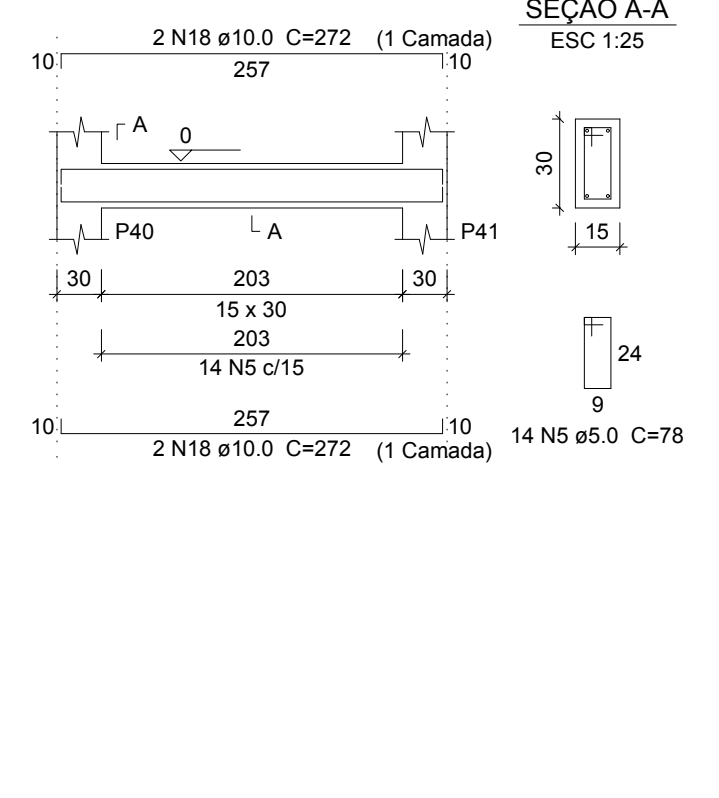
P1=P2=P3=P4=P5=P6=P7=P8=P9=P10=P11=P12  
=P13=P15=P16=P17=P18=P19=P20=P23=P25  
=P26=P28  
BALDRAME - L1  
ESC 1:20



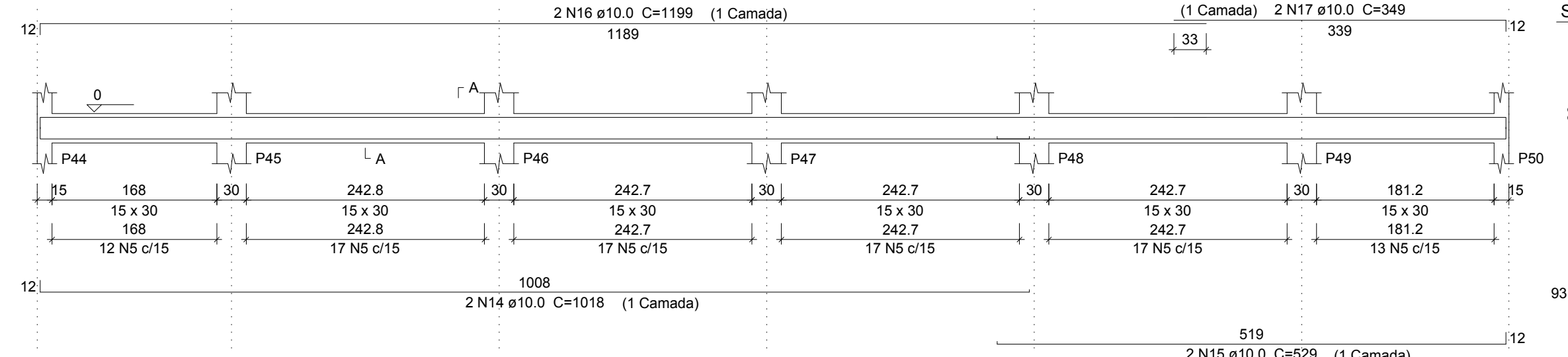
V1  
ESC 1:50



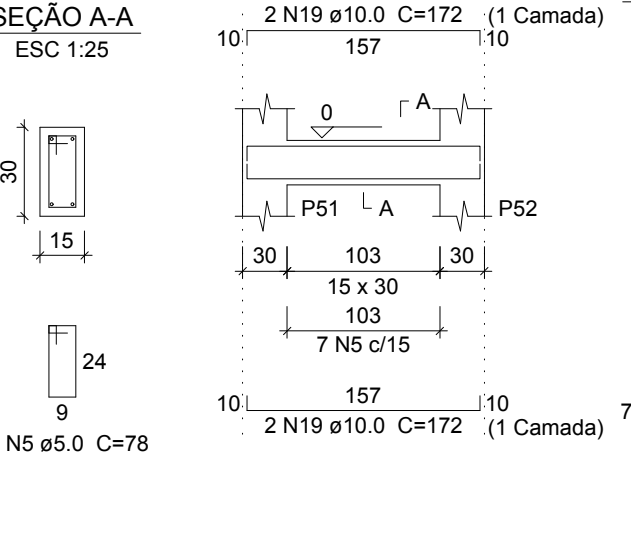
V2  
ESC 1:50



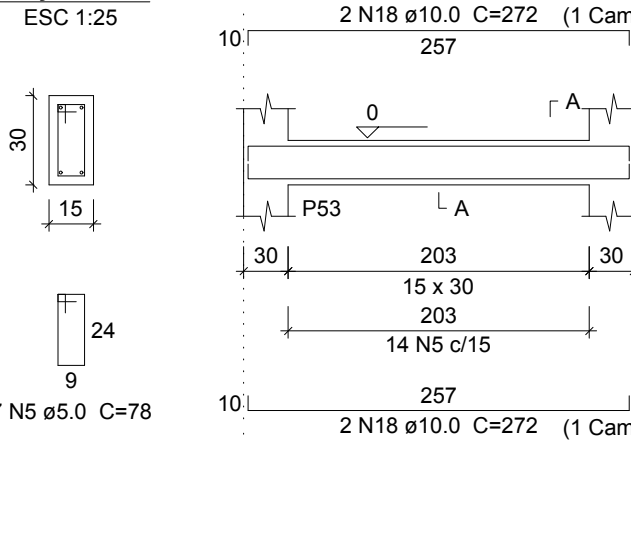
V3  
ESC 1:50



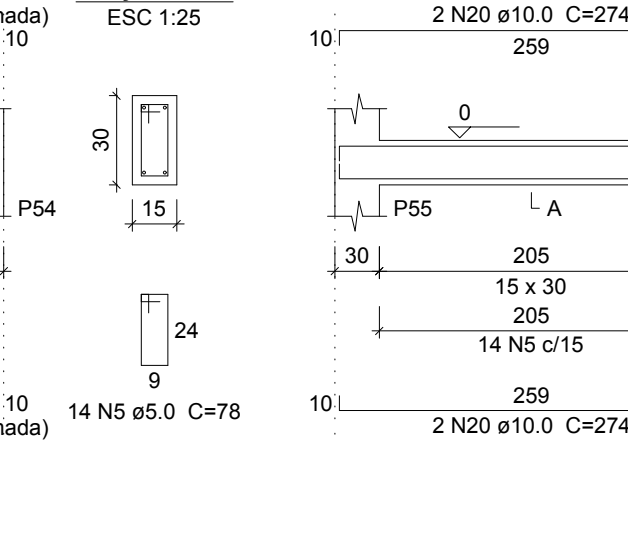
V4  
ESC 1:50



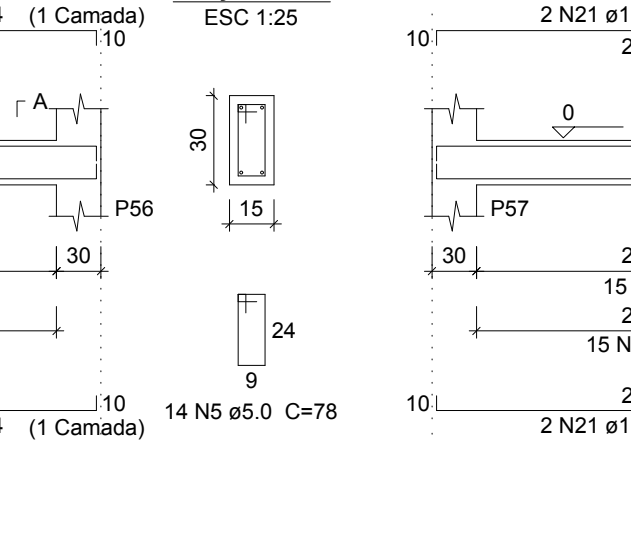
V5  
ESC 1:50



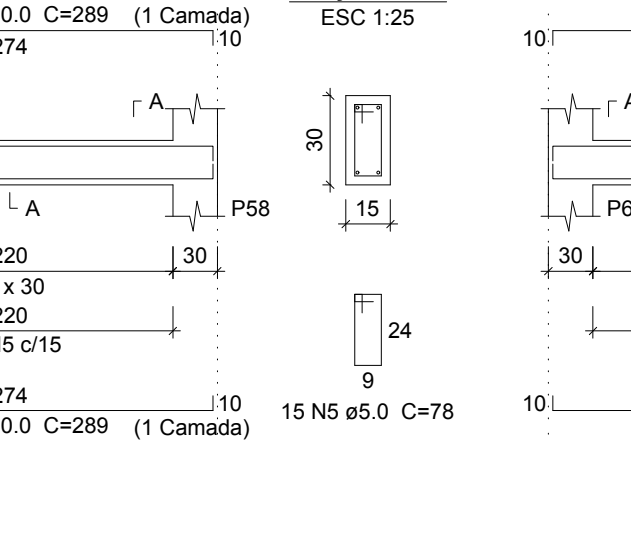
V6  
ESC 1:50



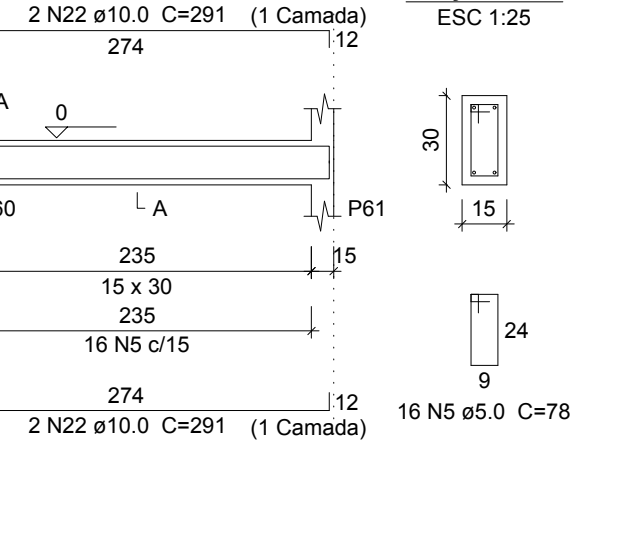
V7  
ESC 1:50



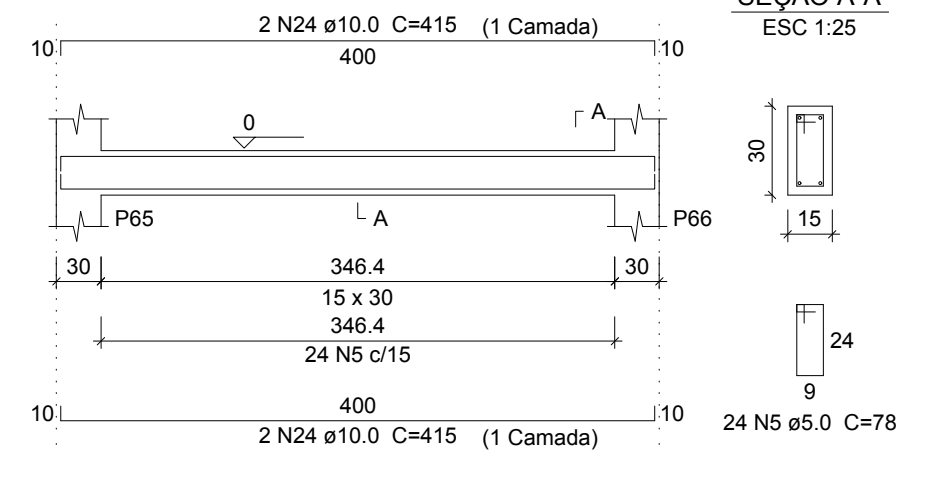
V8  
ESC 1:50



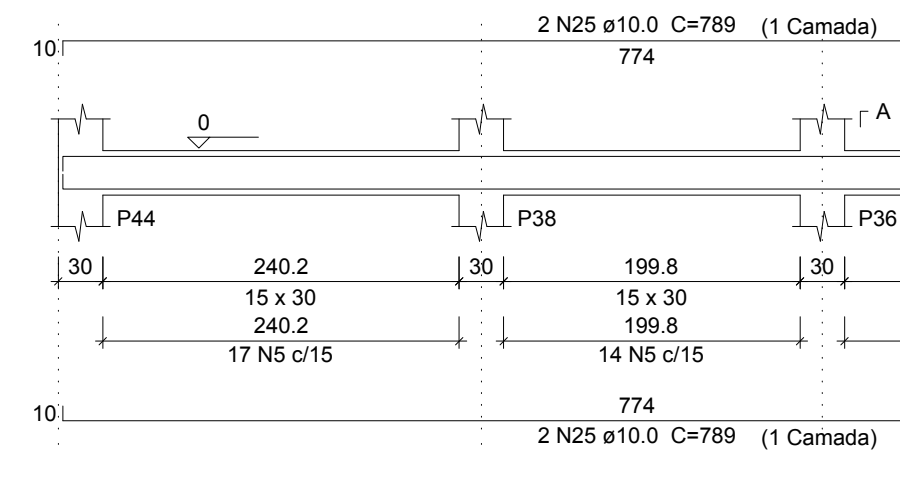
V9  
ESC 1:50



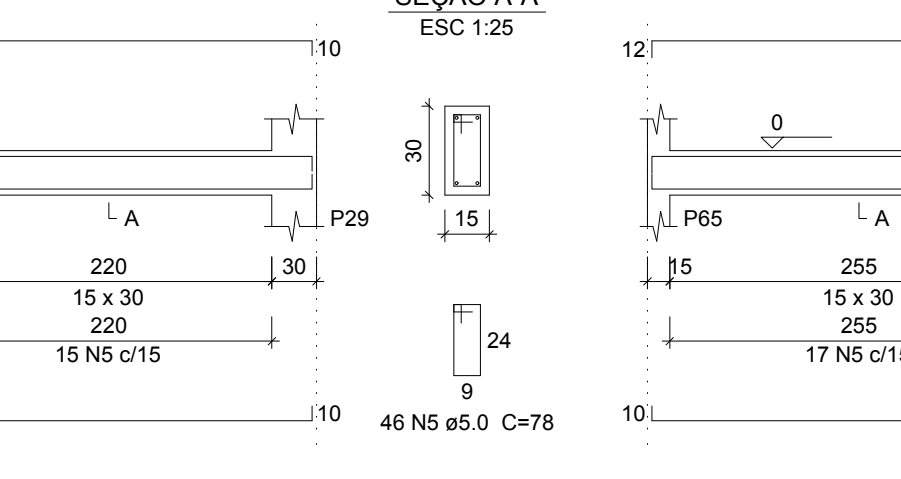
V10  
ESC 1:50



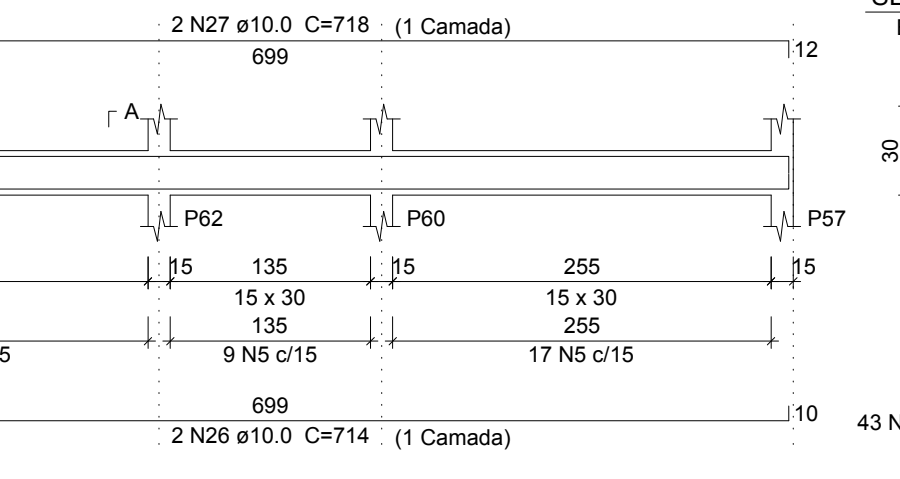
V11  
ESC 1:50



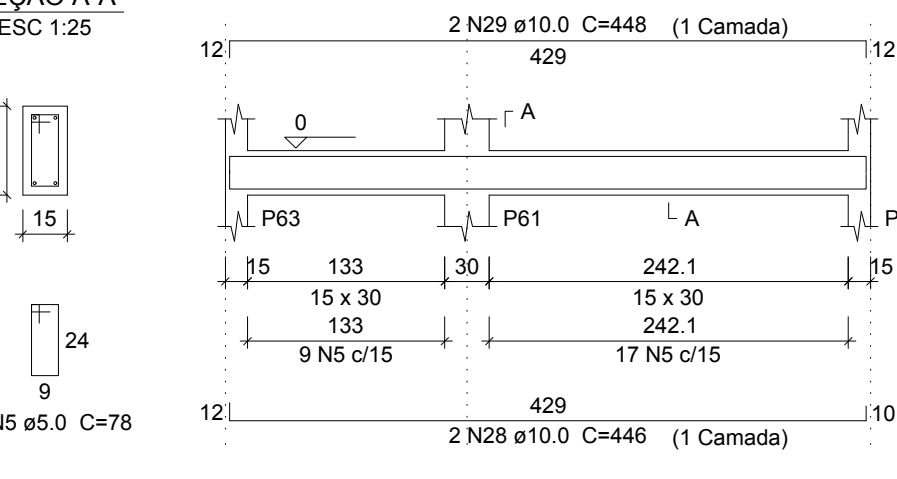
V12  
ESC 1:50



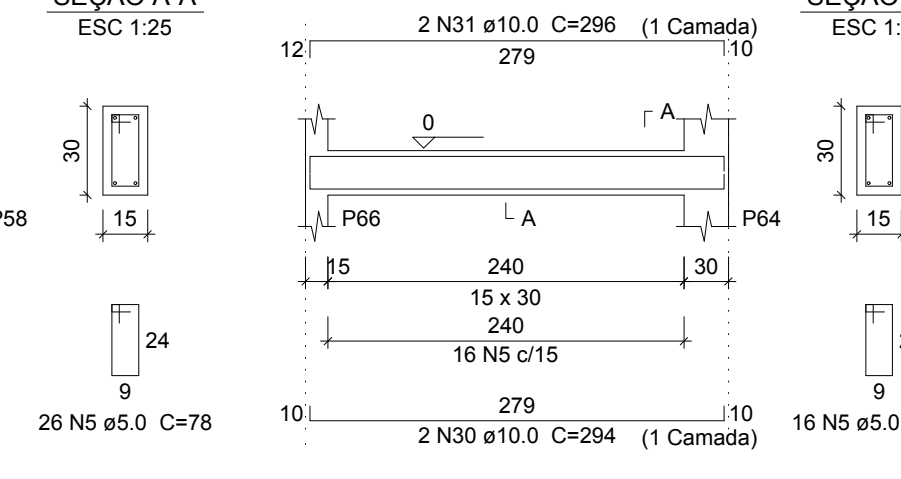
V13  
ESC 1:50



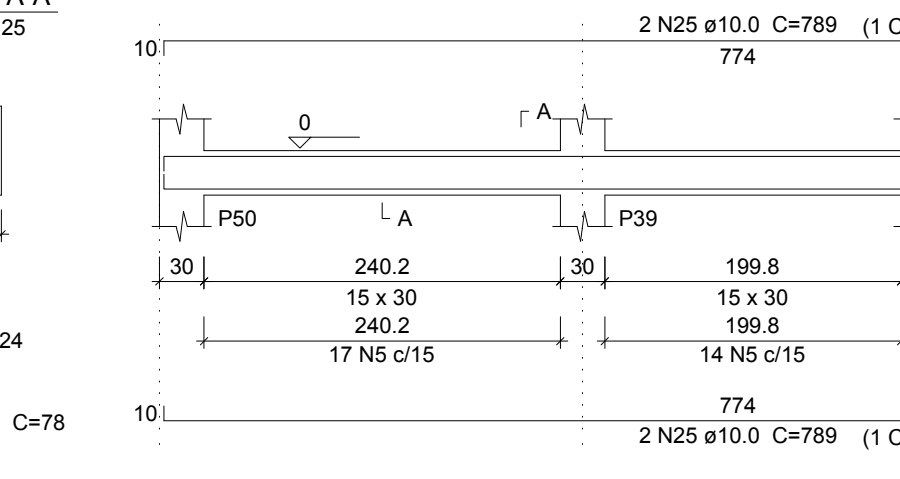
V14  
ESC 1:50



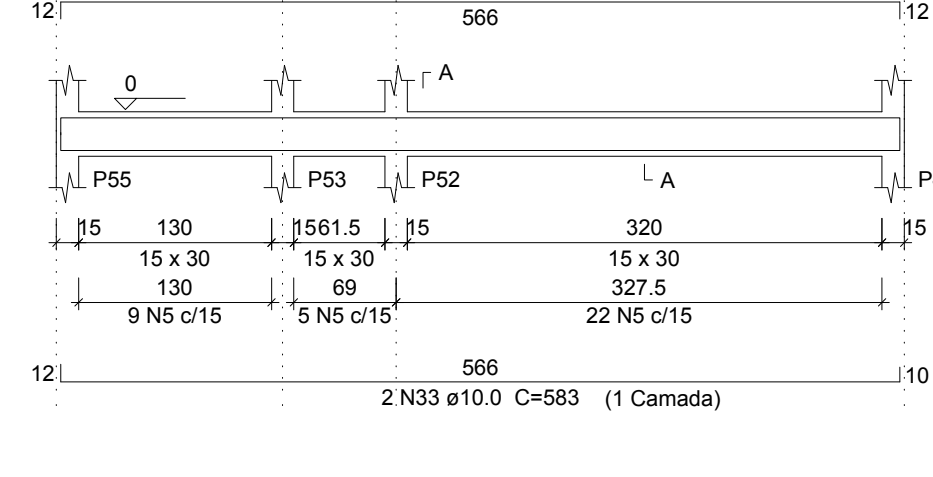
V15  
ESC 1:50



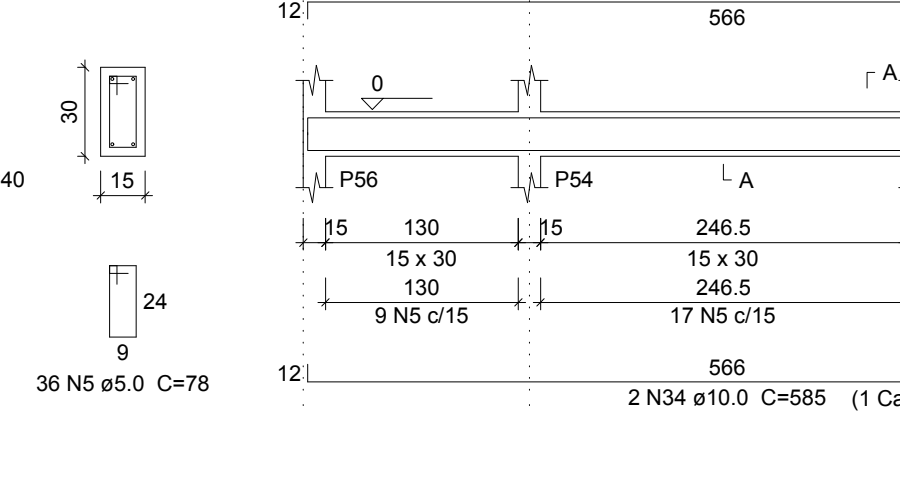
V16  
ESC 1:50



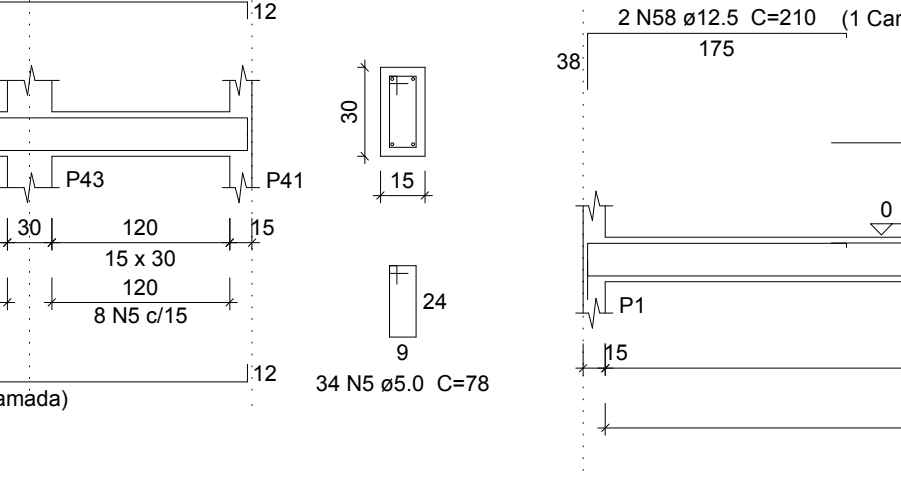
V17  
ESC 1:50



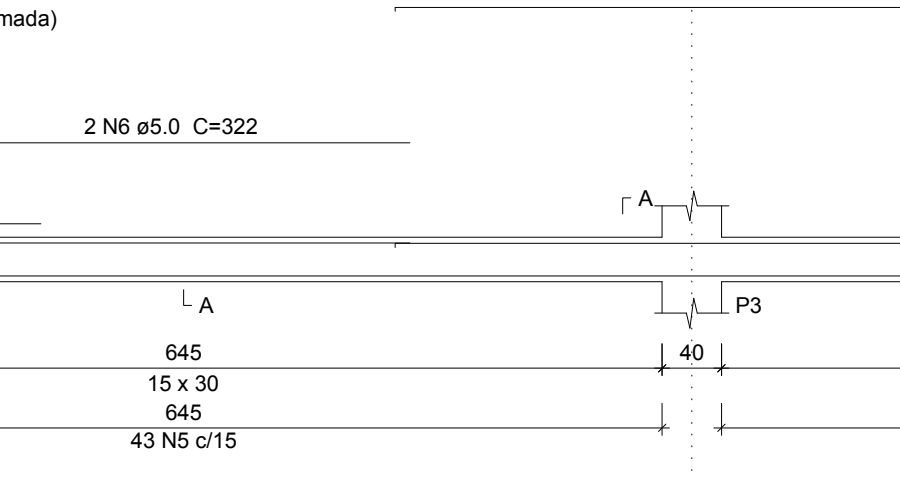
V18  
ESC 1:50



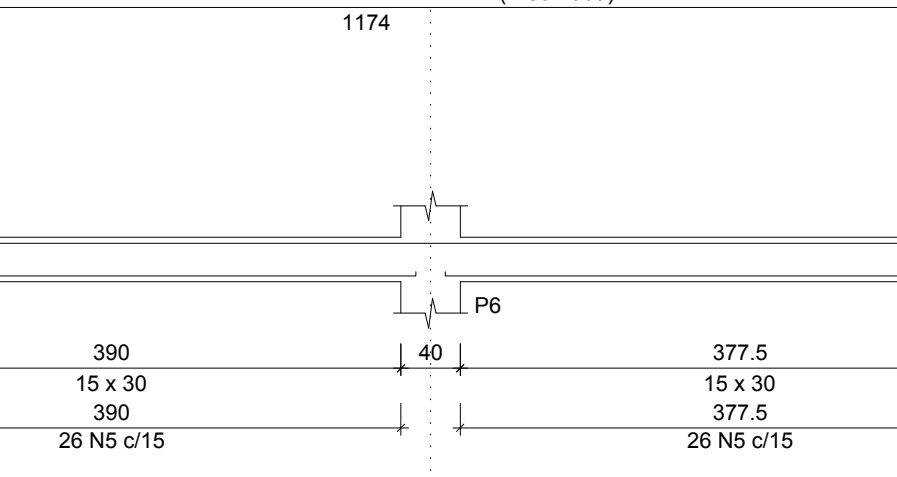
V19  
ESC 1:50



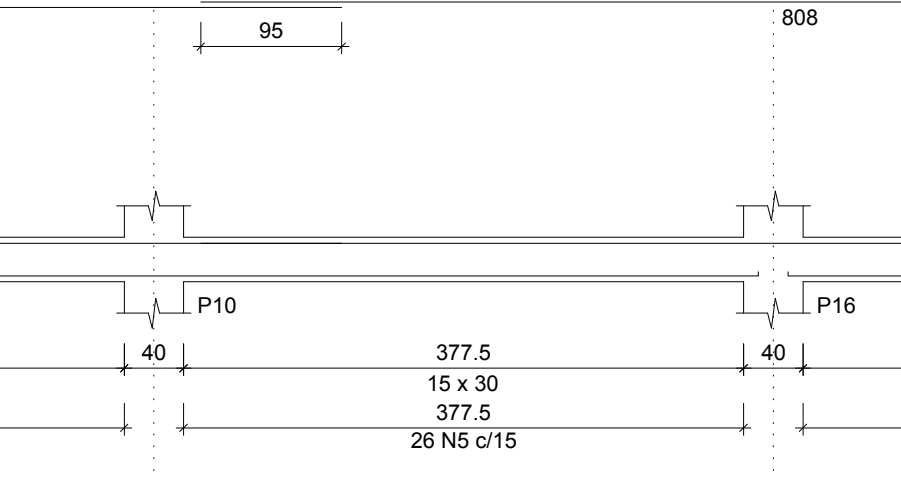
V20  
ESC 1:50



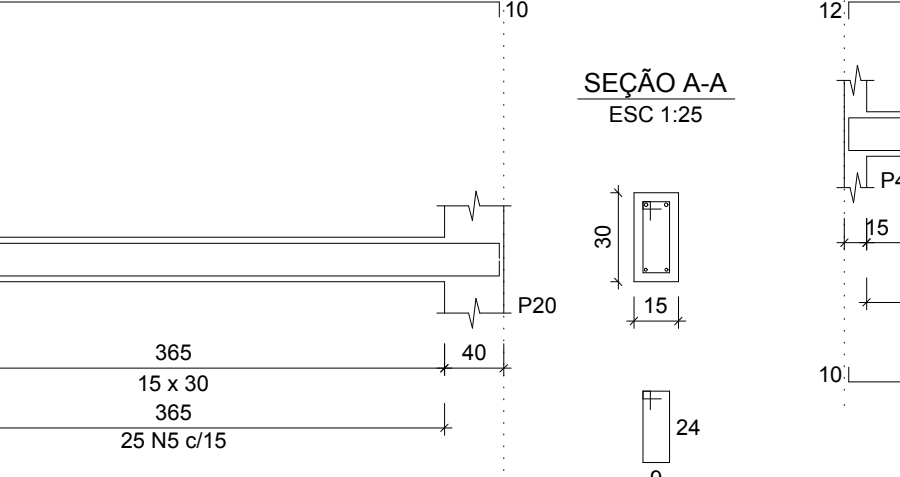
V21  
ESC 1:50



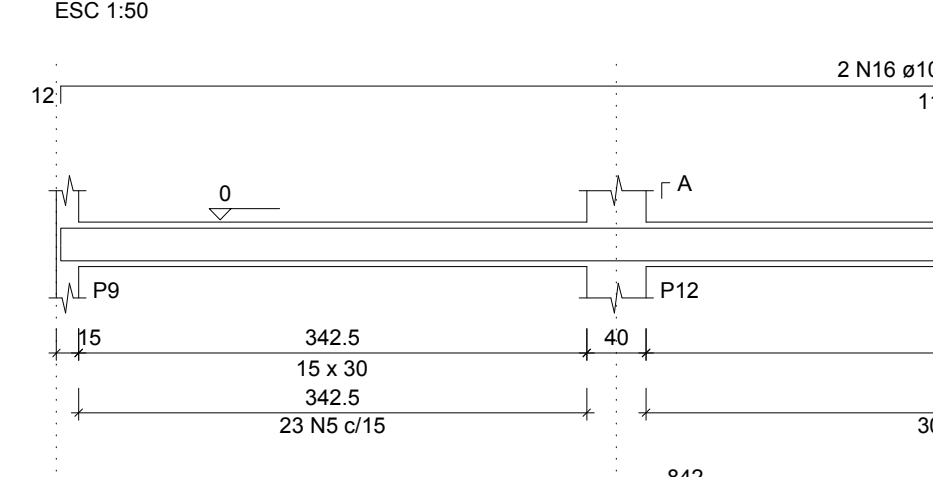
V22  
ESC 1:50



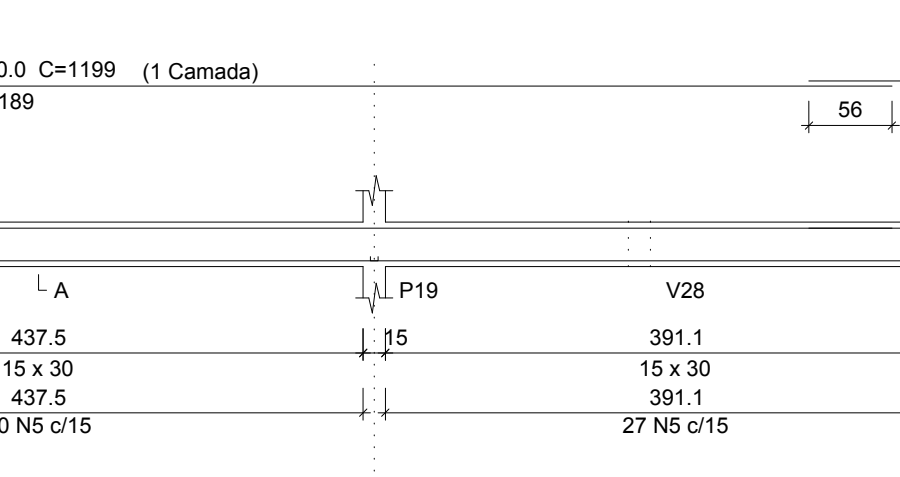
V23  
ESC 1:50



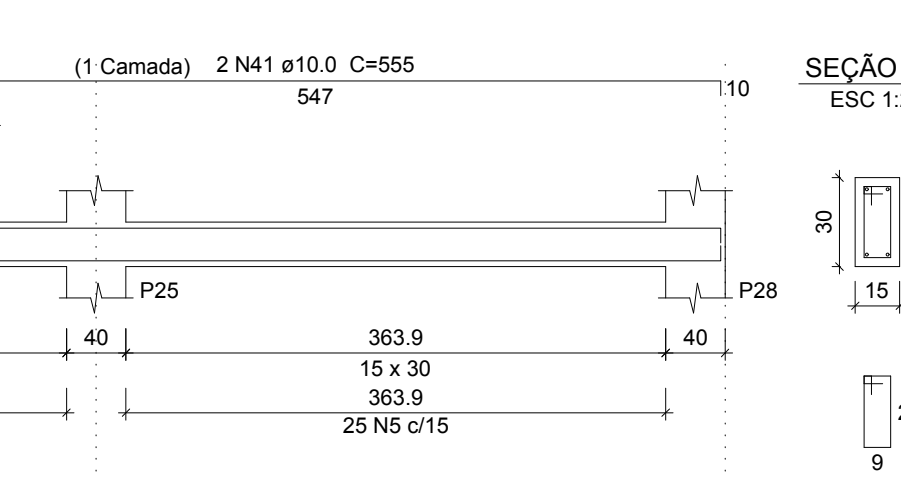
V24  
ESC 1:50



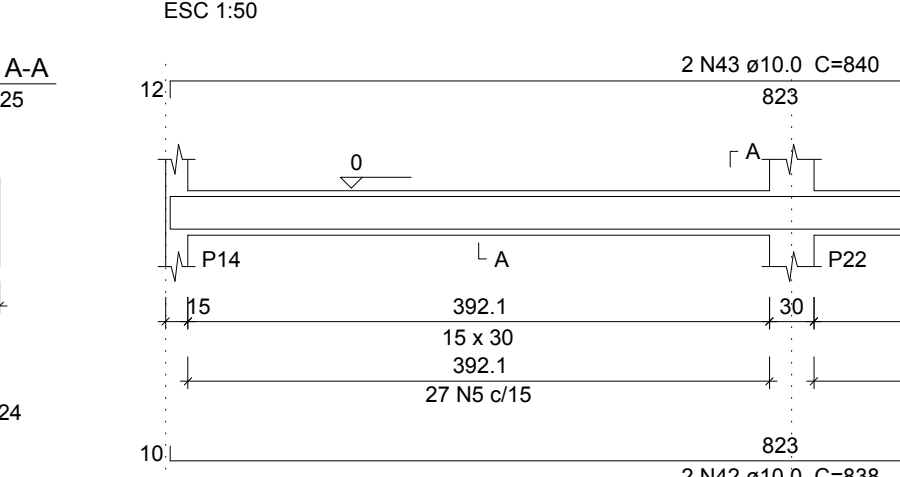
V25  
ESC 1:50



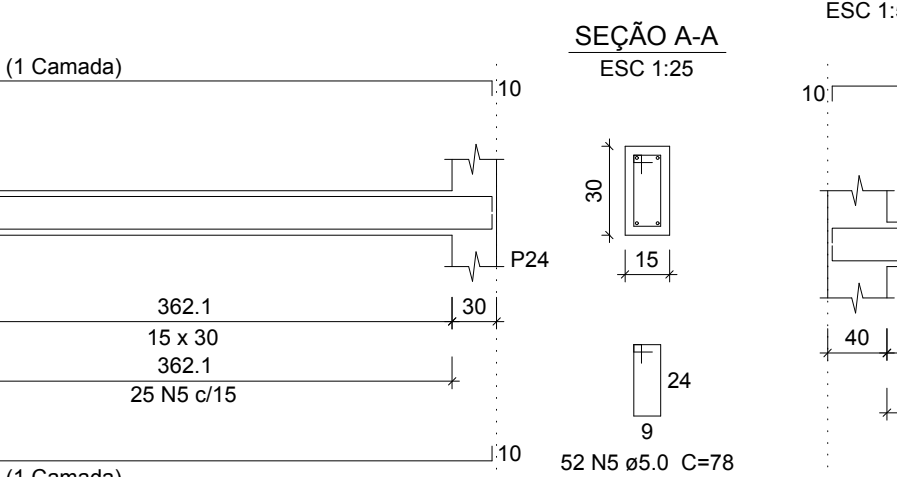
V26  
ESC 1:50



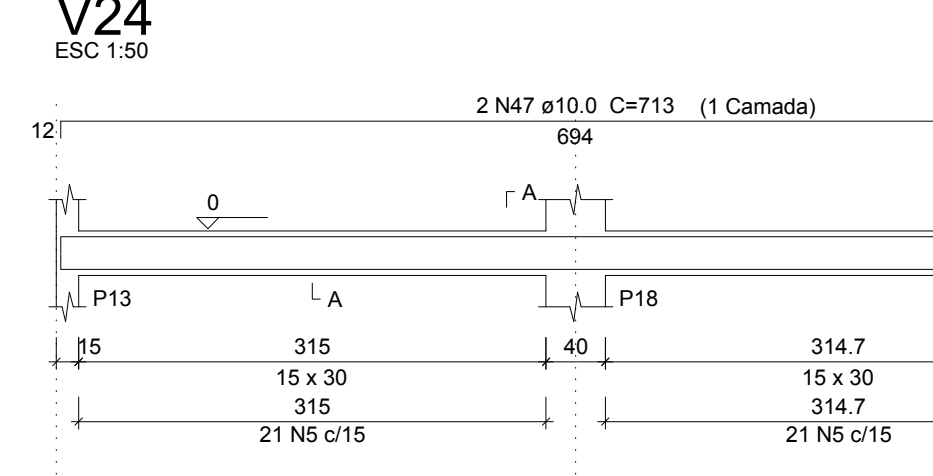
V27  
ESC 1:50



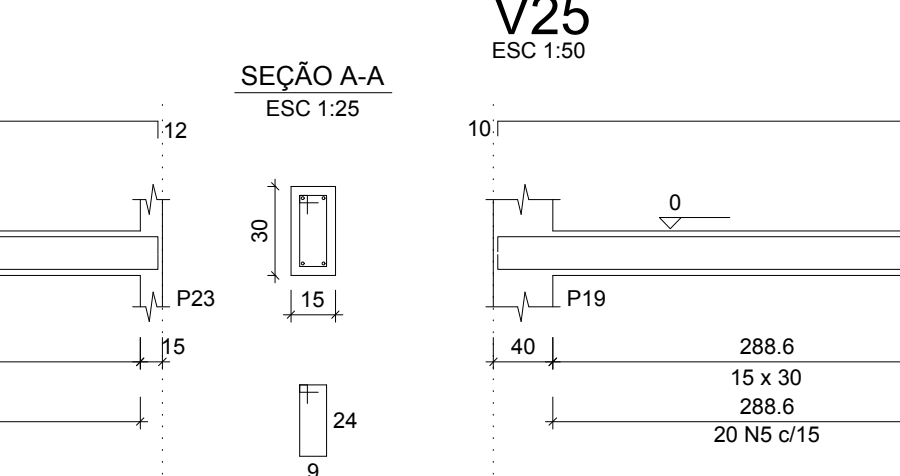
V28  
ESC 1:50



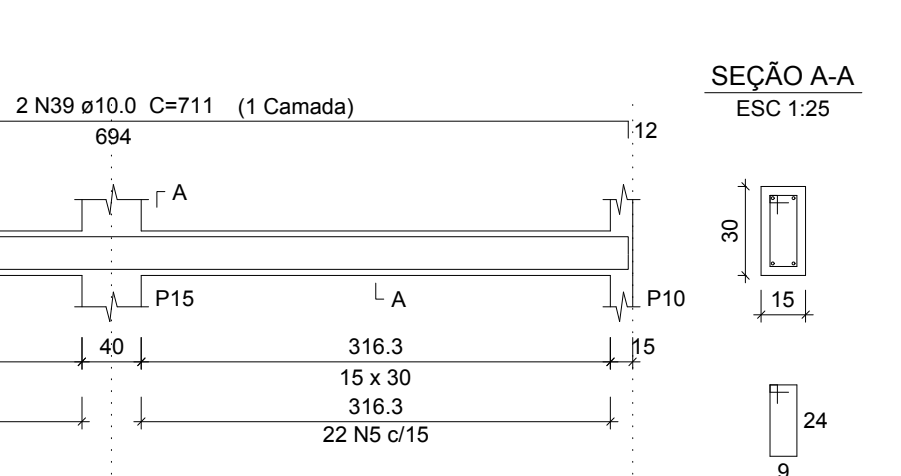
V29  
ESC 1:50



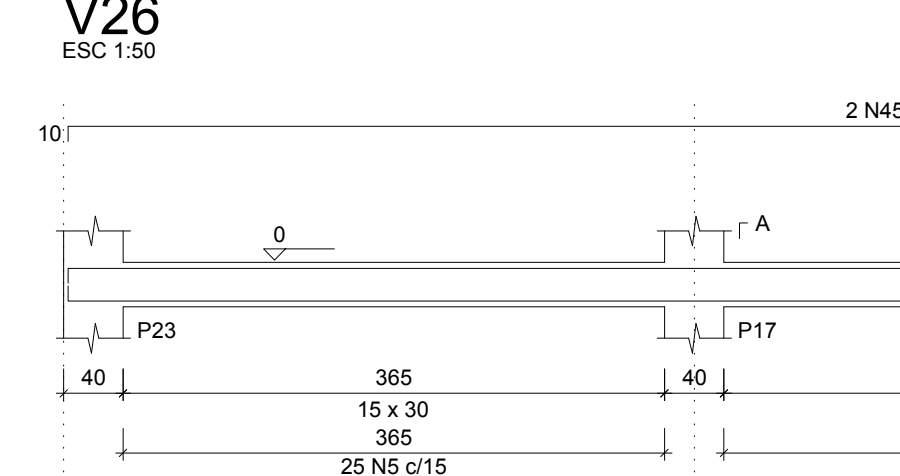
V30  
ESC 1:50



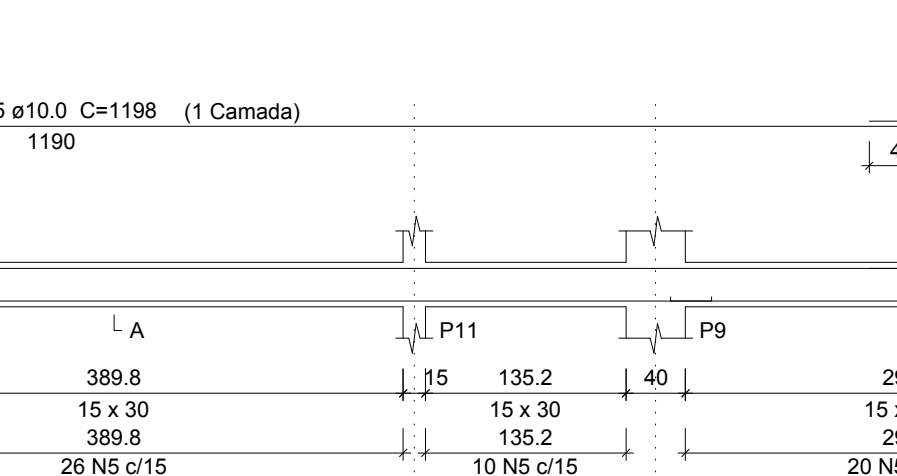
V31  
ESC 1:50



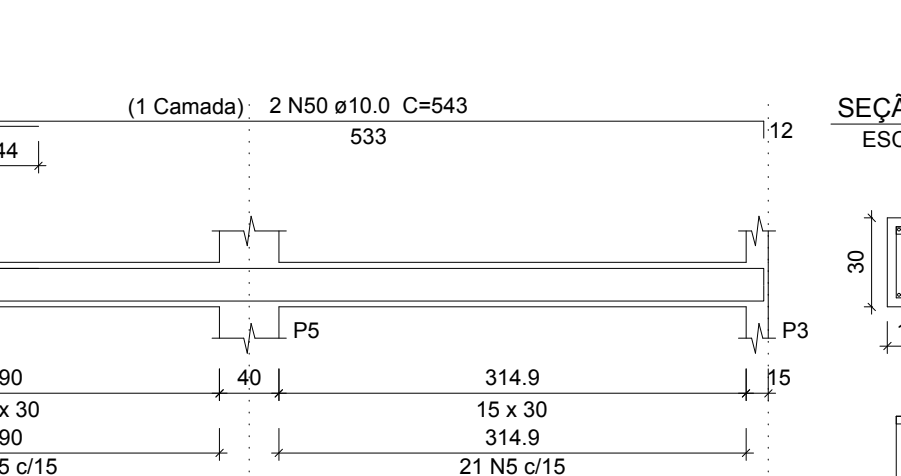
P1



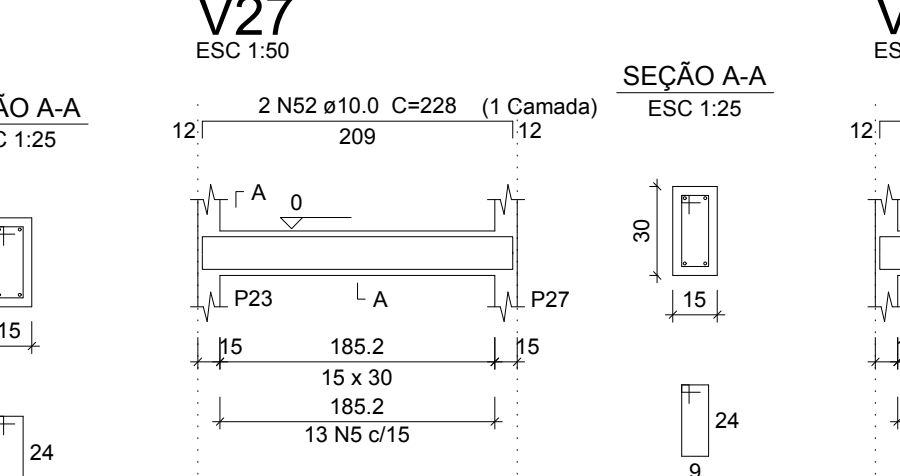
P2=P3=P4=P5=P6=P7=P8=P9=P10=P11=P12=P13  
=P15=P16=P17=P18=P19=P20=P23=P25=P26  
=P28  
=P34=P35=P36=P37=P38=P39=P40=P41=P42  
=P43=P44=P45=P46=P47=P48=P49=P50=P51  
=P52=P53=P54=P55=P56=P57=P58=P59=P60  
=P61=P62=P63=P64=P65=P66



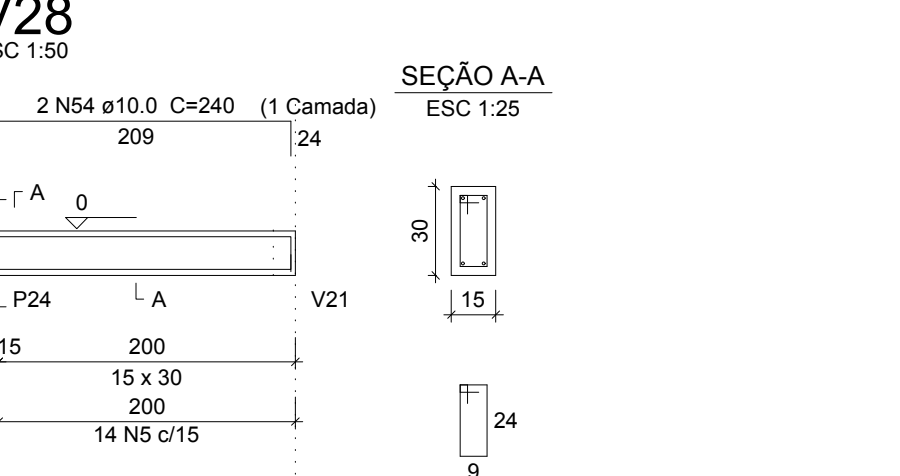
P1



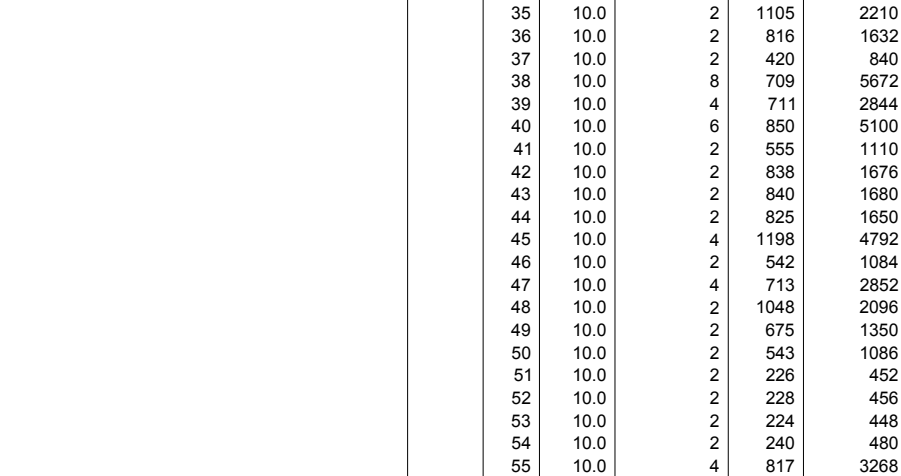
P2=P3=P4=P5=P6=P7=P8=P9=P10=P11=P12=P13  
=P15=P16=P17=P18=P19=P20=P23=P25=P26  
=P28  
=P34=P35=P36=P37=P38=P39=P40=P41=P42  
=P43=P44=P45=P46=P47=P48=P49=P50=P51  
=P52=P53=P54=P55=P56=P57=P58=P59=P60  
=P61=P62=P63=P64=P65=P66



P1



P2=P3=P4=P5=P6=P7=P8=P9=P10=P11=P12=P13  
=P15=P16=P17=P18=P19=P20=P23=P25=P26  
=P28  
=P34=P35=P36=P37=P38=P39=P40=P41=P42  
=P43=P44=P45=P46=P47=P48=P49=P50=P51  
=P52=P53=P54=P55=P56=P57=P58=P59=P60  
=P61=P62=P63=P64=P65=P66



CAPO	N	DIA	QUANT	UNID	C TOTAL
CAPO	1	5.0	6	159	954
	2	5.0	6	159	954
	3	5.0	6	159	954
	4	5.0	6	159	954
	5	5.0	6	159	954
	6	5.0	6	159	954
	7	5.0	6	159	954
	8	5.0	6	159	954
	9	5.0	6	159	954
	10	5.0	6	159	954
	11	5.0	6	159	954
	12	5.0	6	159	954
	13	5.0	6	159	954
	14	5.0	6	159	954
	15	5.0	6	159	954
	16	5.0	6	159	954
	17	5.0	6	159	954
	18	5.0	6	159	954
	19	5.0	6	159	954
	20	5.0	6	159	954
	21	5.0	6	159	954
	22	5.0	6	159	954
	23	5.0	6	159	954
	24	5.0	6	159	954
	25	5.0	6	159	954
	26	5.0	6	159	954
	27	5.0	6	159	954
	28	5.0	6	159	954
	29	5.0	6	159	954
	30	5.0	6	159	954
	31	5.0	6	159	954
	32	5.0	6	159	954
	33	5.0	6	159	954
	34	5.0	6	159	954
	35	5.0	6	159	954
	36	5.0	6	159	954
	37	5.0	6	159	954
	38	5.0	6	159	954
	39	5.0	6	159	954
	40	5.0	6	159	954
	41	5.0	6	159	954
	42	5.0	6	159	954
	43	5.0	6	159	954
	44	5.0	6	159	954
	45	5.0	6	159	954
	46	5.0	6	159	954
	47	5.0	6	159	954
	48	5.0	6	159	954
	49	5.0	6	159	954
	50	5.0	6	159	954
	51	5.0	6	159	954
	52	5.0	6	159	954
	53	5.0	6	159	954
	54	5.0	6	159	954
	55	5.0	6	159	954
	56	5.0	6	159	954
	57	5.0	6	159	954
	58	5.0	6	159	954
	59	5.0	6	159	954
	60	5.0	6	159	954
	61	5.0	6	159	954
	62	5.0	6	159	954
	63	5.0	6	159	954
	64	5.0	6	159	954
	65	5.0	6	159	954
	66	5.0	6	159	954
	67	5.0	6	159	954
	68	5.0	6	159	954
	69	5.0	6	159	954
	70	5.0	6	159	954
	71	5.0	6	159	954
	72	5.0	6	159	954
	73	5.0	6	159	954
	74	5.0	6	159	954
	75	5.0	6	159	954
	76	5.0	6	159	954
	77	5.0	6	159	954
	78	5.0	6	159	954
	79	5.0	6	159	954
	80	5.0	6	159	954
	81	5.0	6	159	954
	82	5.0	6	159	954
	83	5.0	6	159	954
	84	5.0	6	159	954
	85	5.0	6	159	954
	86	5.0	6	159	954
	87	5.0	6	159	954
	88	5.0	6	159	954
	89	5.0	6	159	954
	90	5.0	6	159	954
	91	5.0	6	159	954
	92	5.0	6	159	954
	93	5.0	6	159	954
	94	5.0	6	159	954
	95	5.0	6	159	954
	96	5.0	6	159	954
	97	5.0	6	159	954
	98	5.0	6	159	954
	99	5.0	6	159	954
	100	5.0	6	159	954

Resumo do aço

CAPO	DIA	C TOTAL	QUANT	UNID	PREÇO	%
CAPO	8.0	1139.2	108	108	465.9	
	10.0	2294	130	130	1429.9	
	12.5	62.7	6	6	66.4	
	20	2093.3	304	304	951.3	
PREÇO TOTAL					1593.5	
CAPO	1999.9					
COM	981					

Volume de concreto: 22.05 m³ = 31.85 m³  
Área de forma = 465.1 m²

PROJETO ESTRUTURAL  
AMPLIAÇÃO ESCOLA MUNICIPAL OLGA HANNUN

PREFEITURA DE MORRINHOS  
ASSESSORIA DE PLANEJAMENTO E COORDENAÇÃO

PROPRIETÁRIO: PREFEITURA MUNICIPAL DE MORRINHOS

ENDEREÇO: RUA BOLEINHA COM RUA FLORENÇA QD. 13, JARDIM ROMANO, MORRINHOS-GO

PROFESSOR: Rômulo Barbosa Rezende  
Engenheiro Civil CREA 13.863/O-0

CONTRATO: FUNDAÇÃO VIGAS PILARES

ÁREA DO TERMO: JULHO DE 2021

ÁREA DE PLANEJAMENTO: 472.55m²

ESCALA: INDICADA

SEÇÃO: PAVN

3/5